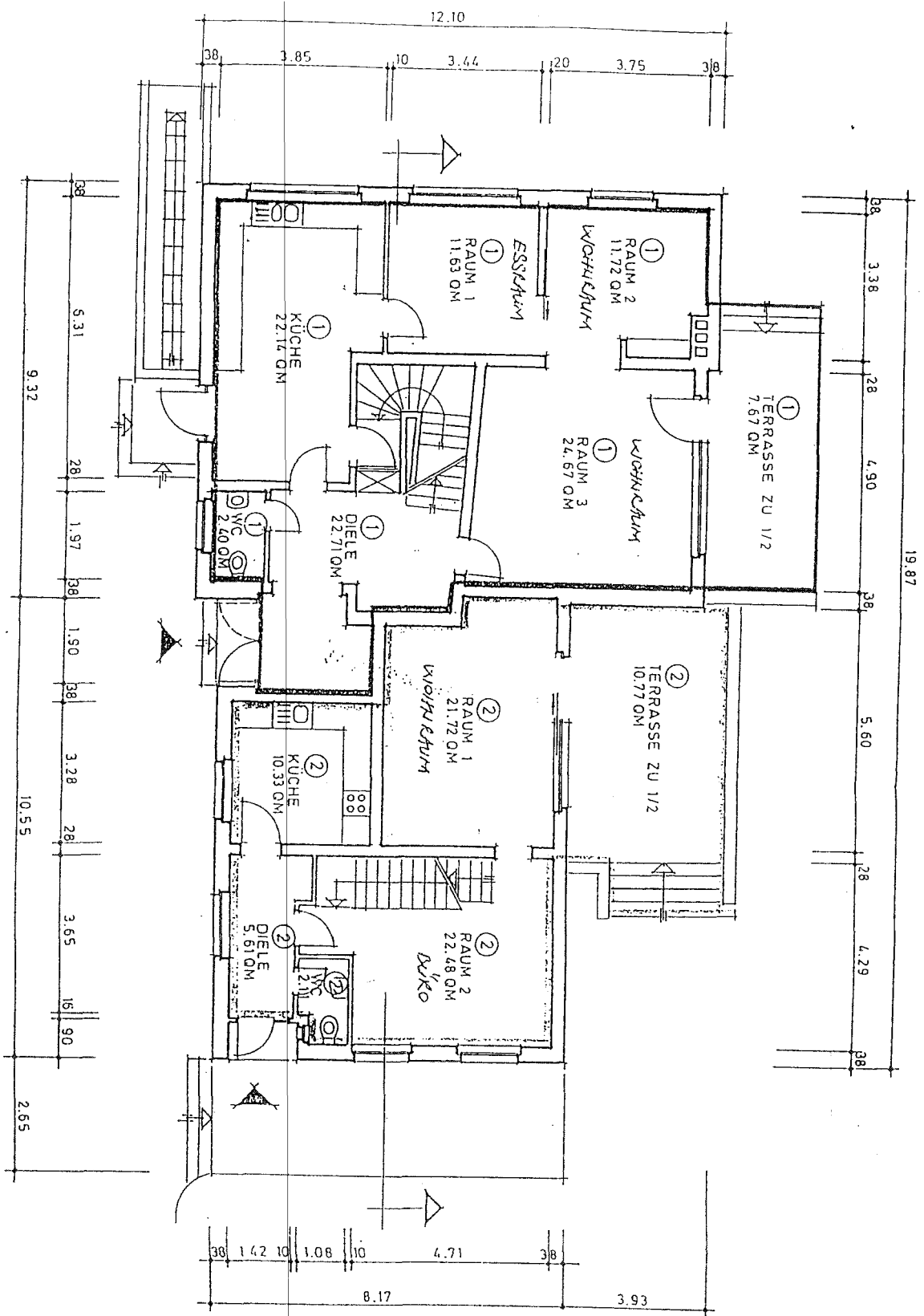


ERDGESCHOSS

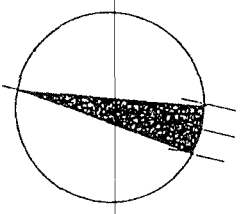


Wohnung Nr. 1

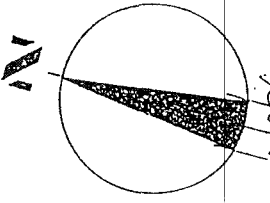
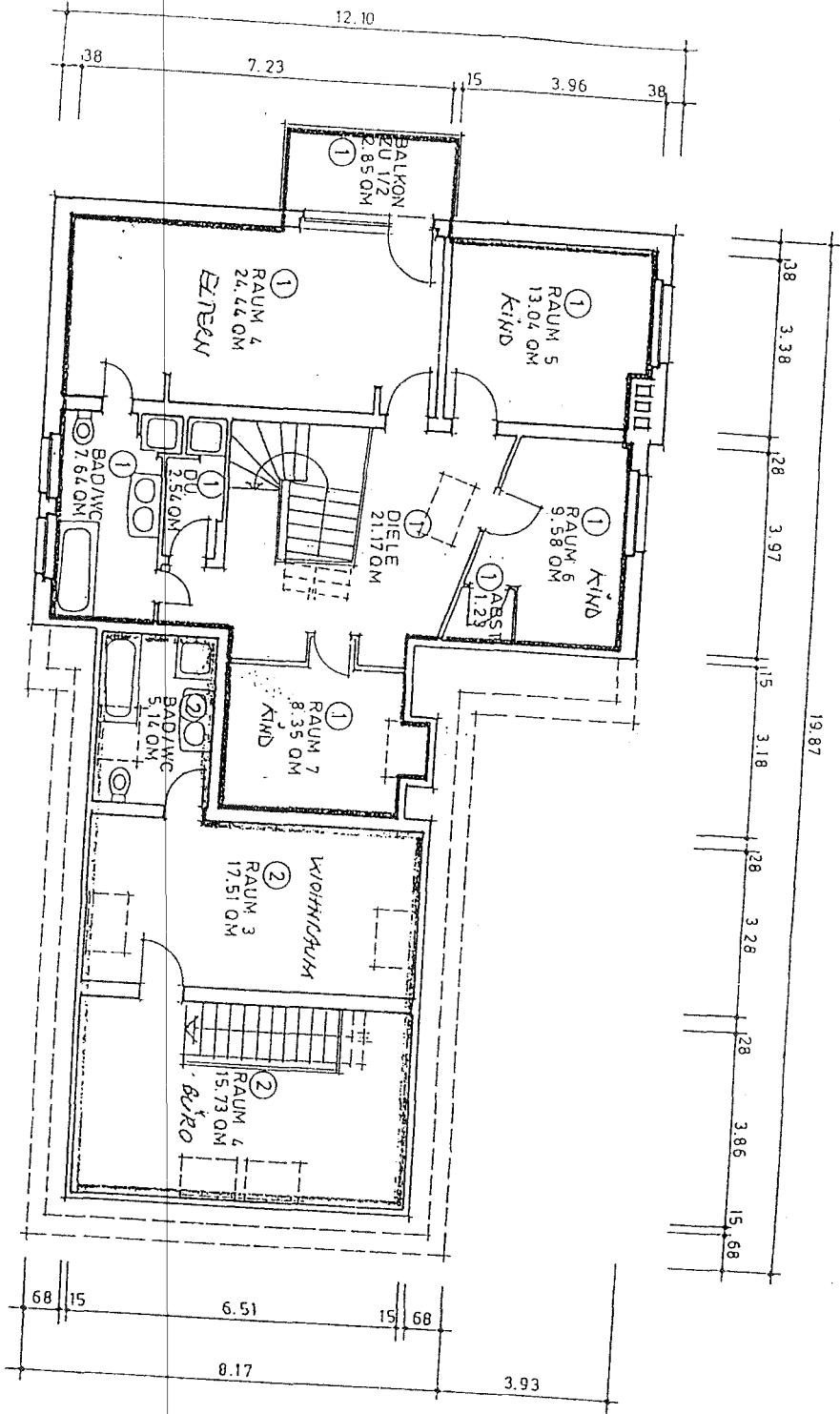
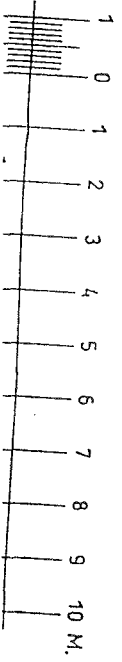
Raum 1	11,63 qm
Raum 2	11,72 qm
Raum 3	24,67 qm
Küche	22,14 qm
WC	2,40 qm
Diele	22,71 qm
Terrasse zu 1/2	7,67 qm
102,94 qm	=====

Wohnung Nr. 2

Raum 1	21,72 qm
Raum 2	22,48 qm
Küche	10,33 qm
WC	2,11 qm
Diele	5,61 qm
Terrasse zu 1/2	10,77 qm
73,02 qm	=====



DACHGESCHOSS

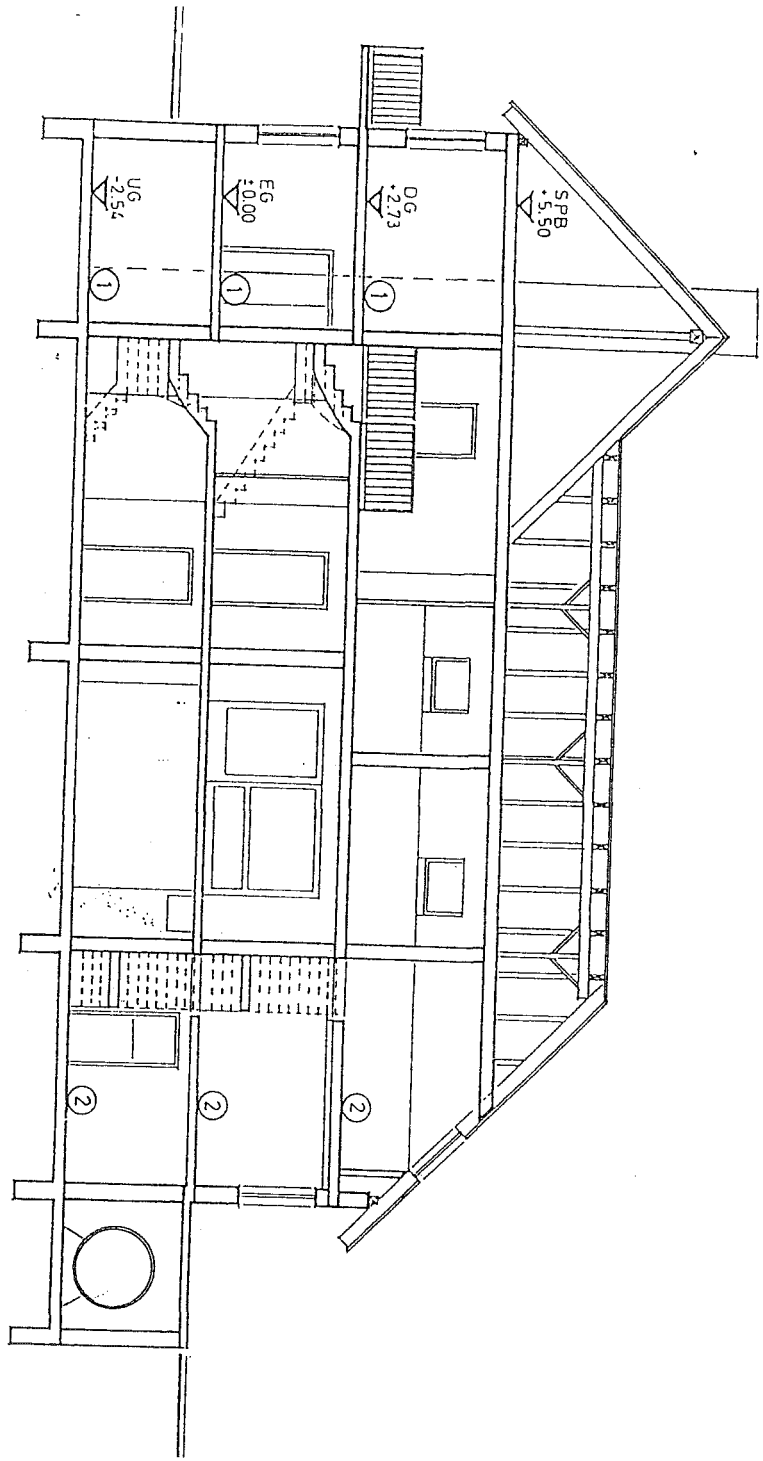


Wohnung Nr. 1

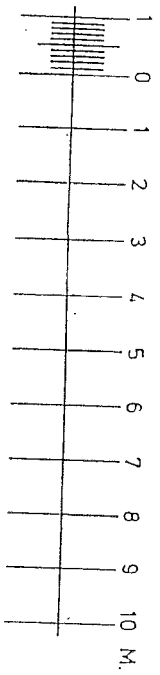
Raum 4	24,44 qm
Raum 5	13,04 qm
Raum 6	9,58 qm
Raum 7	8,35 qm
Dusche	2,54 qm
Bad/WC	7,64 qm
Abstellr.	1,23 qm
Diele	21,17 qm
Balkon zu 1/2	87,99 qm
	2,85 qm
	90,84 qm
=====	

Wohnung Nr. 2

Raum 3	17,51 qm
Raum 4	15,73 qm
Bad/WC	5,14 qm
	38,38 qm
=====	

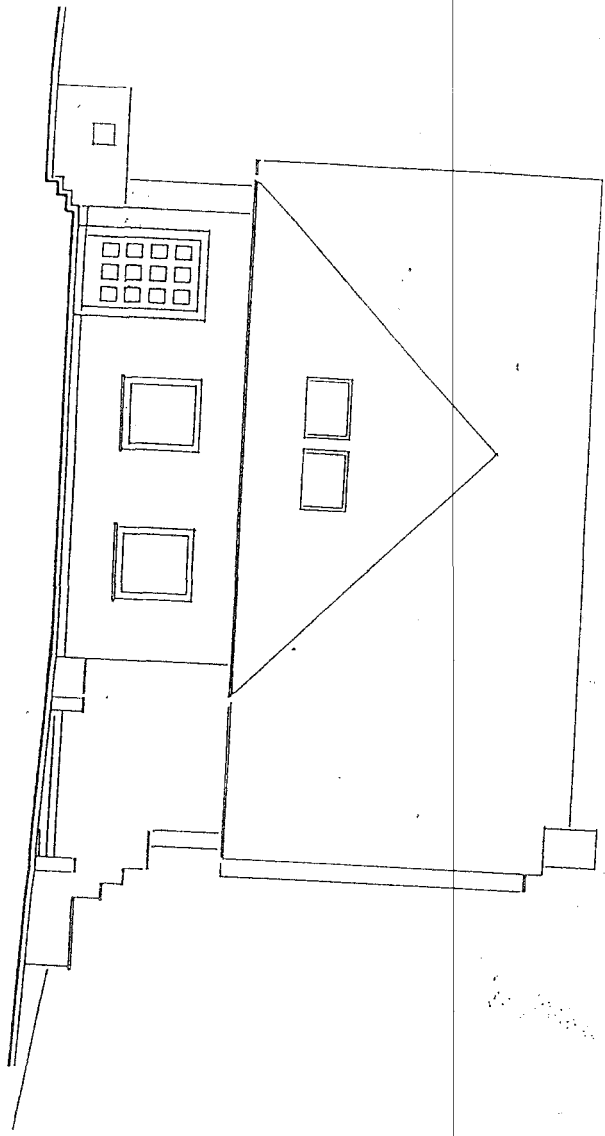


SCHEMATA

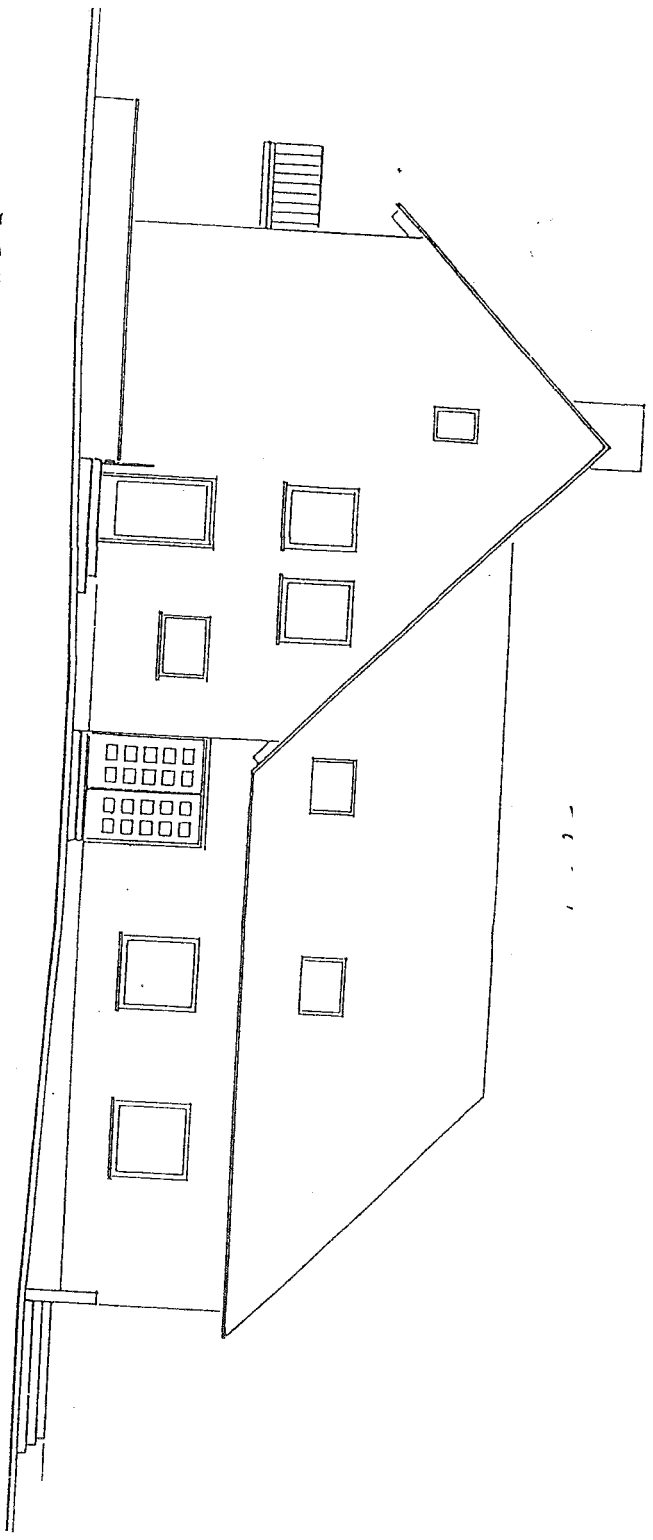


-20	2.30	24	2.45	28	2.50	27	3.48	50
-80	2.54		2.73		2.77		3.98	

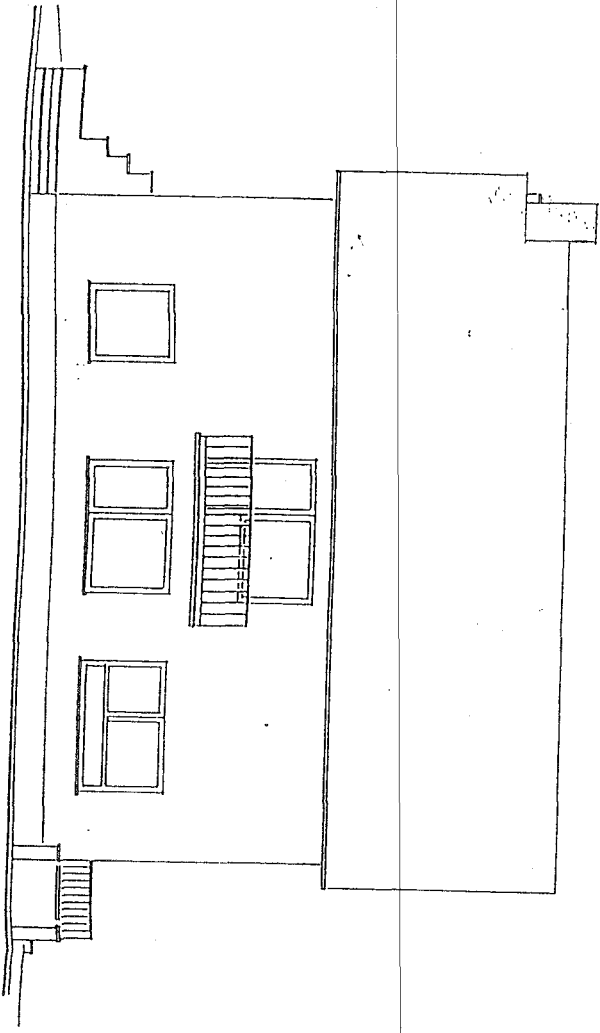
VON WESTEN



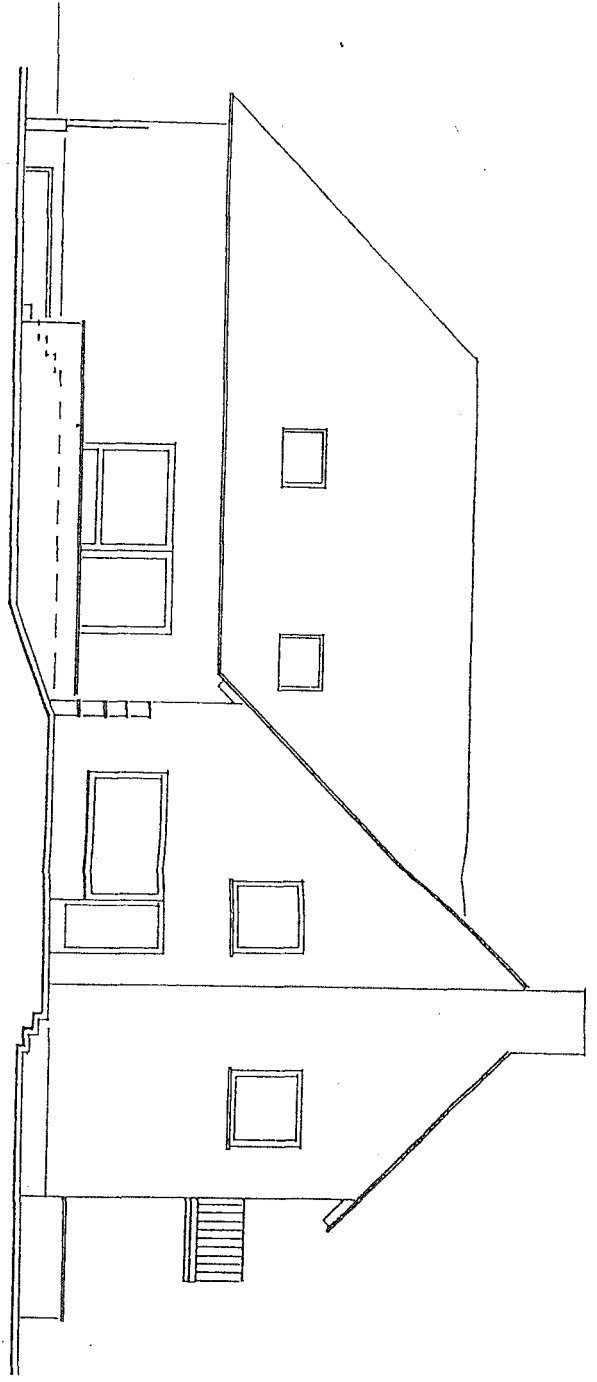
VON NORDEN

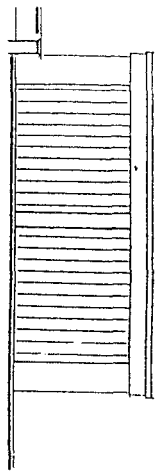


VON OSTEN

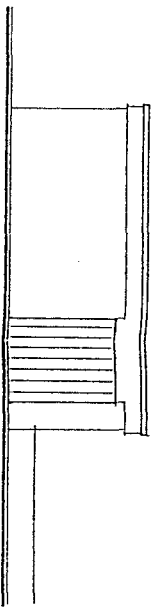


VON SÜDEN

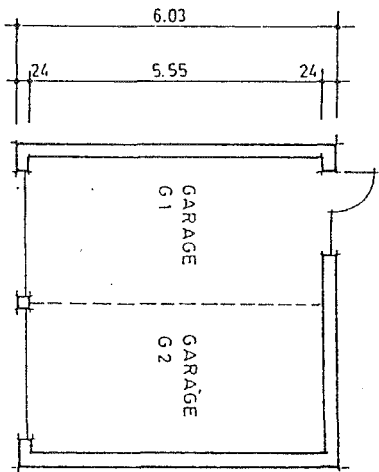




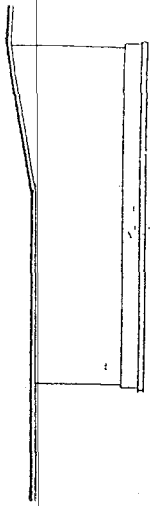
VON WESTEN



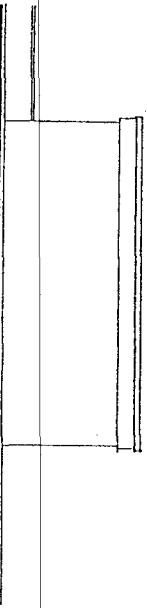
VON OSTEN



GRUNDRISS



VON NORDEN



VON SÜDEN

